

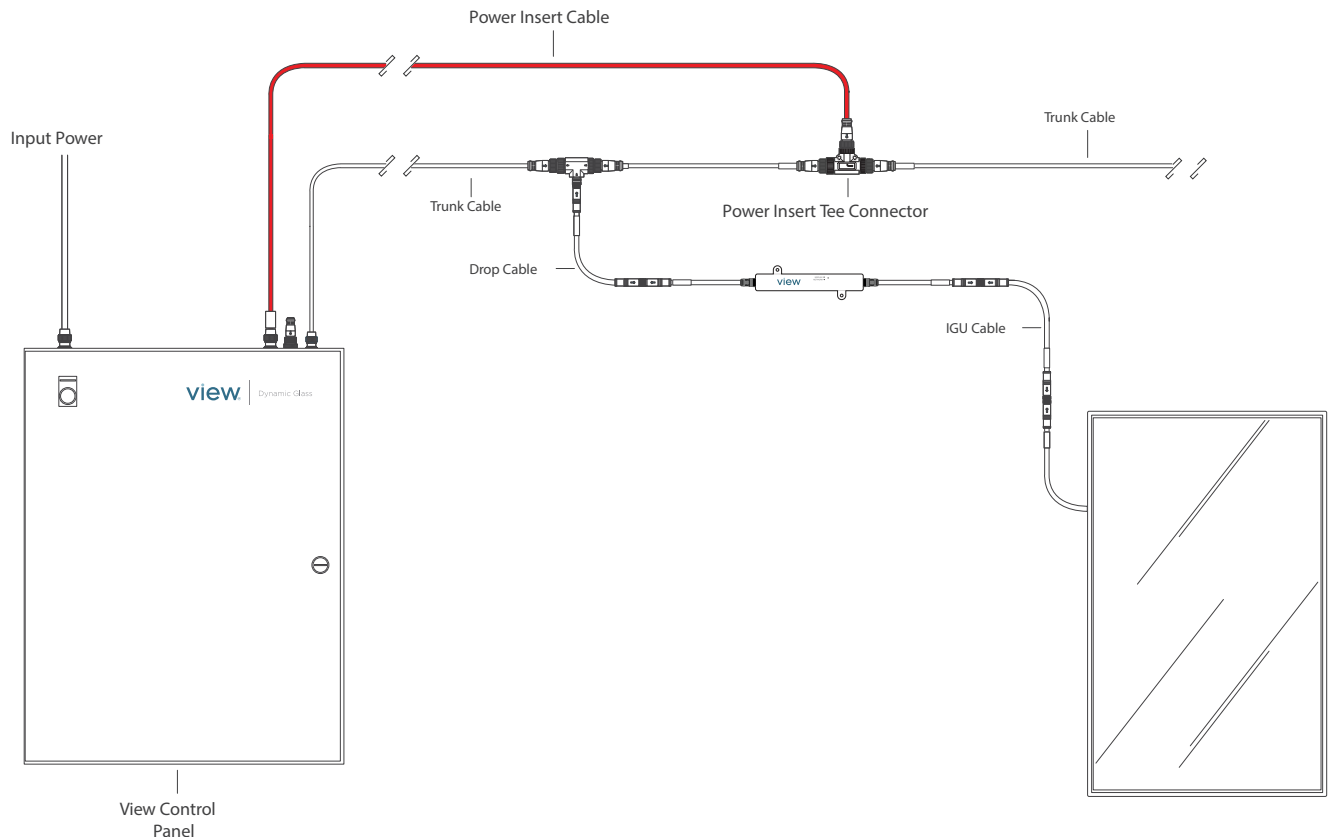
## Power Insert Cable & Connectors

Power Insert Cables distribute electrical power from the View Control Panel to the Trunk Cabling System. Power inserts can originate from a Control Panel or a standalone power injection panel. Each Power Cable is connected to a Trunk Cable via a Power Connector. Power Insert Cables are terminated with field wireable Power Cable Connectors.

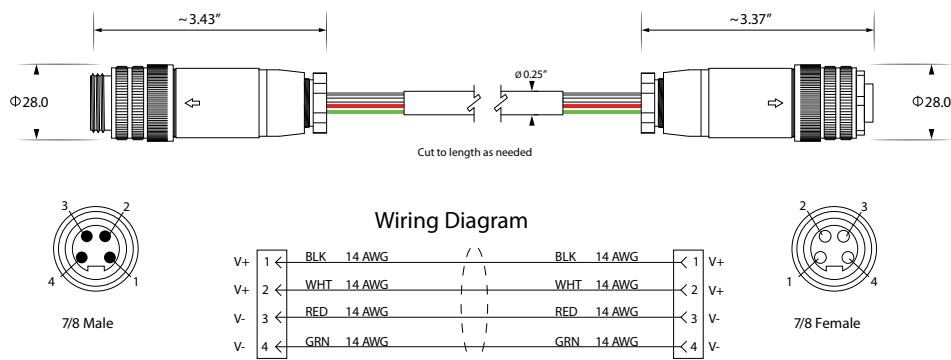
- Class 3 Plenum rated cable with 4 14-AWG conductors, available in 500 & 1000 foot spools.  
Note: Cable jacket color may vary.
- Male/Female 4-pin Field Wireable connectors
- All power insert cables are plenum rated.



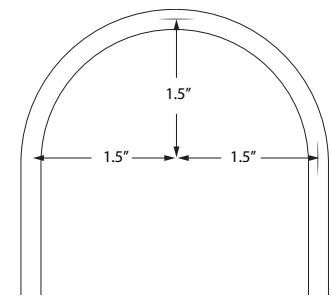
### Application Example



## Wiring Diagram



## Bend Radius



## Specifications

Conductors	4 14AWG
Jacket	Unshielded, Low Smoke Polyvinyl Chloride
Bend Radius	1.5" minimum bend radius is six times the cable diameter
Rated Current	6.4 A Max per conductor
Rated Voltage	150V Max
Cable Rating	Cable Rating Plenum/CL3P
Warranty	All cables and components carry a warranty for a period of 5 years from date of delivery by View. Refer to standard warranty terms and conditions for more details.
Electrical	Products have IP rated connectors to transfer power to and from the IGU
Used in conjunction with	Power Tee Connector or Power WYE Connector

## Ordering Information

Part Number	Description
300-101032-01	Power Insert Cable, 14 AWG, Plenum, 500 foot spool
300-101032	Power Insert Cable, 14 AWG, Plenum, 1000 foot spool
310-000061	Power Cable Connector, 7/8 inch. Field Wireable, 4-pin, Male
310-000063	Power Cable Connector, 7/8 inch. Field Wireable, 4-pin, Female
370-000025	Power Tee Connector, 7/8 inch, 4-pin/5-pin, Male, 5-pin, Female
370-000030	Power Wye Connector, 7/8 inch, 4-pin/5-pin, Male, 5-pin, Female

## Requirements for Cold Weather Installation

If the cable has to be installed when the temperature is below 32°F, the following precautions should be taken to ensure that the jacket does not crack:

- Store the cable in a heated area with temperatures above 60°F for 24 hours before installation.
- Cables need to be handled with care and not dropped, kinked, or bent roughly.
- Pull cables slowly, use large sheaves and lubes suitable for cold temperatures.